

KazLines Help Contents



[Overview](#)



[Shape Selection](#)



[Line Options](#)



[Color Options](#)



[General Options](#)



[Registration Information](#)



[License Agreement](#)



[Disclaimer of Warranty](#)



[Product Information](#)



KazLines Overview

KazLines creates an image that continuously changes shape, size, and color. Different images can be created by selecting a new shape or changing the line, color, or general options. The image can be saved and used by other applications with the SaveAs or Copy commands.

Related Topics

[Shape Selection](#), [Line Options](#), [Color Options](#), [General Options](#)



KazLines Registration

There are two versions of **KazLines** - demonstration and registered. (Use the About command from the Help menu to determine which version you have.) The demonstration version contains the same features found in the registered version. However, the demonstration version runs for a maximum of five minutes at a time.

You may use the demonstration version of **KazLines** for up to fifteen days to evaluate the software. After these fifteen days, the program must be registered with **Kaczynski Software** if you continue to use it.

To register **KazLines**, print a registration form using the Print Registration Form command from the File menu. Fill out the form and send it to **Kaczynski Software** with your registration fee of only \$5. You will receive the registration number to register your copy. In addition, you will receive a disk with the most recent version of **KazLines** if you do not already have it.

Related Topics

License, Disclaimer of Warranty

SaveAs Command (File Menu)

Use this command to save the current window as a bitmap file. After selecting this menu item, specify the drive, directory, and name of the bitmap file in the dialog box that appears.

For best results, use the shortcut key (hold the Ctrl key down and press S) to issue this command and prevent the menu from interfering with the image.

This command may not work correctly when the adjust palette option is checked.

Related Topics

Copy Command, Clear Command

Copy Command (Edit Menu)

Use this command to copy the current window to the clipboard as a bitmap image. After the window has been copied to the clipboard, use the Paste Command in another application to copy the bitmap into that application.

For best results, use the shortcut key (hold the Ctrl key down and press Insert) to issue this command and prevent the menu from interfering with the image.

This command may not work correctly when the adjust palette option is checked.

Related Topics

[SaveAs Command](#), [Clear Command](#)

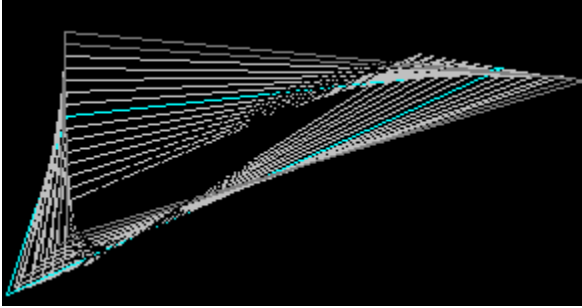
Clear Command (Edit Menu)

Use this command to erase the window.

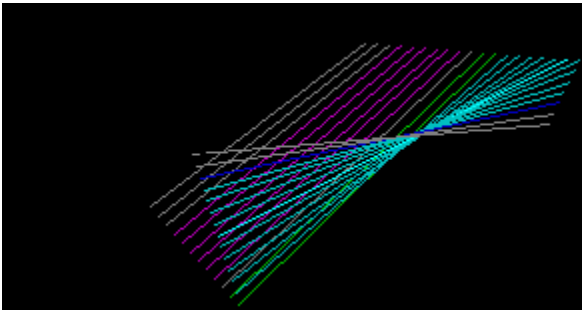


Shape Selection

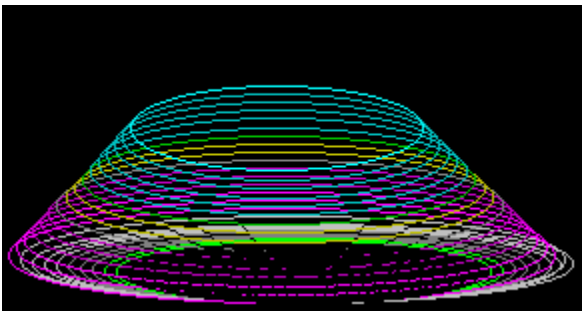
A variety of shapes are available to change the appearance of the image in the window. To change the current image, select a new shape from the Shape menu. The following shapes are available:



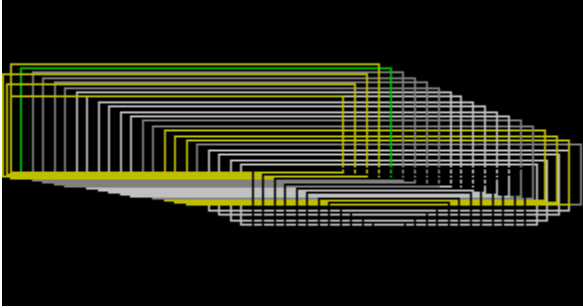
Triangles



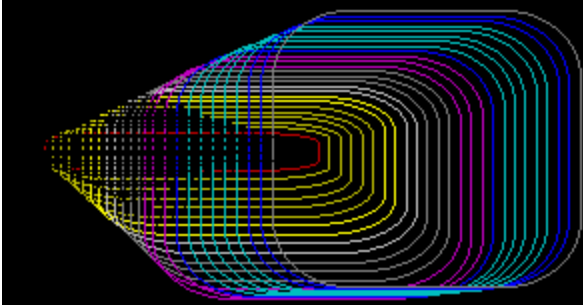
Lines



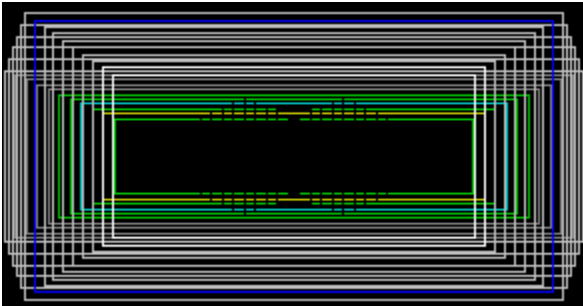
Circles



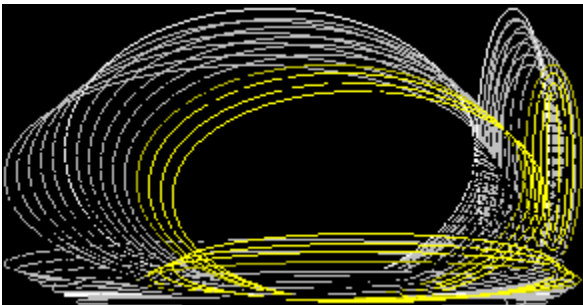
Rectangles



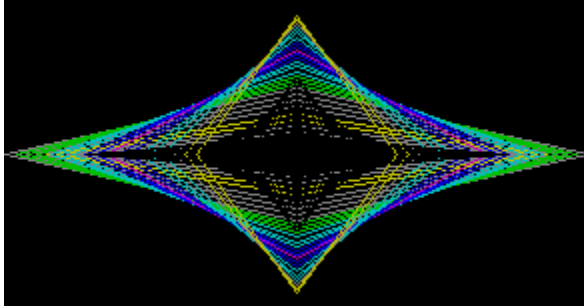
Round Rectangles



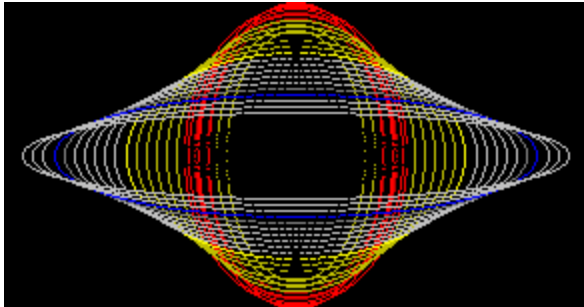
Boxes



Rings



Diamonds



Hoops



Line Options Command (Options Menu)

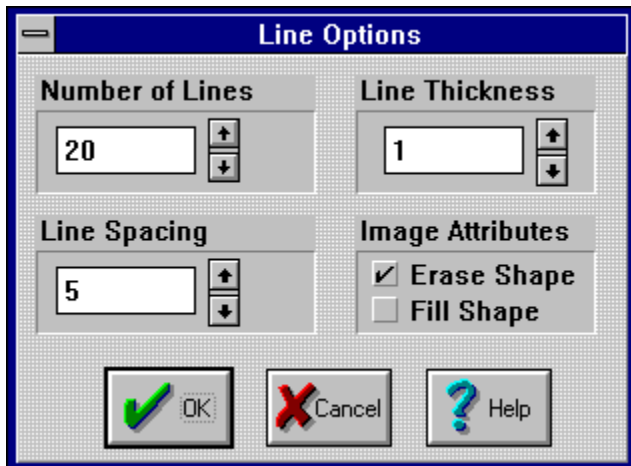
Use this command to open the [Line Options Dialog Box](#) and change the settings for [number of lines](#), [line thickness](#), [line spacing](#), and [image attributes](#).

Related Topics

[Line Options Dialog Box](#), [Shape Selection](#), [Color Options Command](#), [General Options Command](#)

Line Options Dialog Box

Click on the field in the box below for help on that field.



Related Topics

[Line Options Command](#), [Color Options Dialog Box](#), [General Options Dialog Box](#)

Number of Lines (Line Options Dialog Box)

Use this field to specify the maximum number of lines drawn in the window when the erase shape box is checked. If the erase shape box is not checked, this field is ignored.

Line Spacing (Line Options Dialog Box)

Use this field to specify the amount of space between lines. Larger numbers cause the shapes to be drawn farther apart.

Line Thickness (Line Options Dialog Box)

Use this field to specify the thickness of each line (in pixels). Larger numbers result in thicker lines. Depending on the video card, setting this field to a number greater than one may cause other applications to slow down and the timer delay to increase.

Image Attributes (Line Options Dialog Box)

Erase Shape

Check this box to erase the shape when the maximum number of lines has been drawn. If the box is unchecked, the shapes are not erased from the window and are continuously drawn on top of each other.

Fill Shape

Check this box to fill the shape when it is drawn. If the box is unchecked, only the outline of the shape is drawn. Depending on the video card, filling shapes may slow down other applications and cause the timer delay to increase.



Color Options Command (Options Menu)

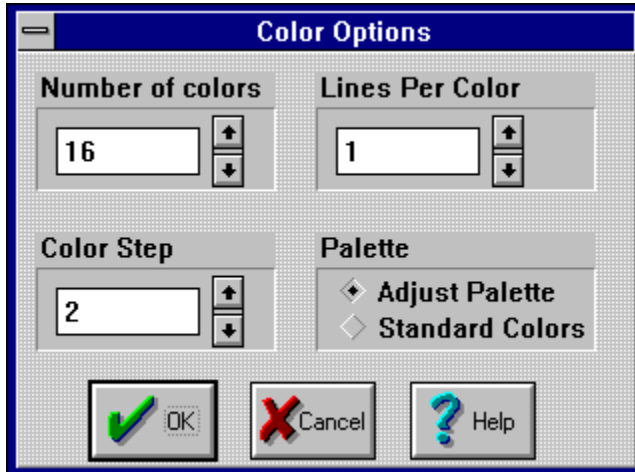
Use this command to open the [Color Options Dialog Box](#) and change the settings for the number of colors, lines per color, color step, and palette.

Related Topics

[Color Options Dialog Box](#), [Shape Selection](#), [Line Options Command](#), [General Options Command](#)

Color Options Dialog Box

Click on the field in the box below for help on that field.



Related Topics

[Color Options Command](#), [Line Options Dialog Box](#), [General Options Dialog Box](#)

Number of Colors (Color Options Dialog Box)

Use this field to specify the number of different colors that should be used in the window before they are repeated. The maximum entry for this field depends on the resolution of your video card and monitor.

Lines Per Color (Color Options Dialog Box)

Use this field to specify the number of lines to draw with each color. Smaller numbers cause the shape to change colors frequently.

Color Step (Color Options Dialog Box)

Use this field to specify how quickly the colors should change. Smaller numbers cause colors to gradually blend together. Large numbers cause the colors to change quickly. The color change is also determined by the adjust palette box.

Palette (Color Options Dialog Box)

Use these radio buttons to specify how colors are mapped to your display. Either the palette can be adjusted or the standard colors can be used.

Adjust Palette

Check this box to blend colors together smoothly when the color step parameter is small. There are a limited number of colors available to Windows, so use of this option may cause the colors of other applications to change, especially when the number of colors parameter is near its maximum. This feature may not work with all video cards.

Standard Colors

Check this box to use standard Windows colors. The colors won't blend smoothly together but they won't cause color problems with other applications.



General Options Command (Options Menu)

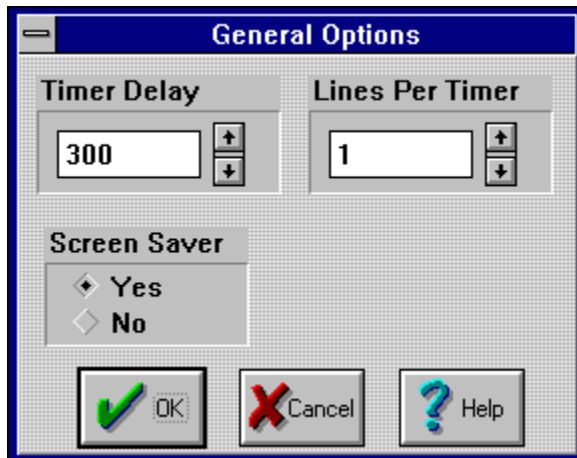
Use this command to open the General Options Dialog Box and change the settings for the timer delay, lines per tick, and screen saver.

Related Topics

General Options Dialog box, Shape Selection, Color Options Command, Line Options Command

General Options Dialog Box

Click on the field in the box below for help on that field.



Related Topics

[General Options Command](#), [Line Options Dialog Box](#), [Color Options Dialog Box](#)

Timer Delay (General Options Dialog Box)

Use this to specify the length of time (in milliseconds) between timer ticks. Smaller numbers cause shapes to be drawn faster.

The speed of the program also depends on the video card, lines per tick and line thickness. If the response of other applications is poor while **KazLines** is running, increase this parameter. If **KazLines** detects that it is severely impacting the performance of other applications, it automatically increases this setting.

Lines Per Tick (General Options Dialog Box)

Use this field to specify the number of lines that should be drawn for each tick of the timer. If this parameter is set too high and the timer delay is too low, the performance of other applications may suffer and this field should be decreased.

Screen Saver (General Options Dialog Box)

Use these radio buttons to specify if the **KazLines** program should give control to the screen saver that is defined in the Windows Control Panel after the defined period of inactivity.

Yes

Check this box If the screen saver defined on the Windows Control Panel should run after the defined period of inactivity.

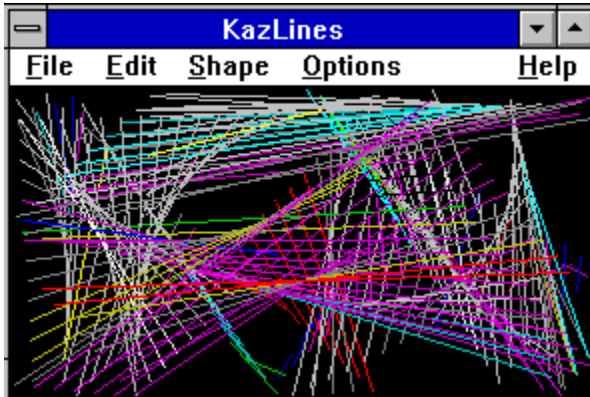
No

Check this box if **KazLines** should prevent the screen saver from running. **KazLines** can only prevent the screen saver from appearing when it is the active application. If **KazLines** is running in the background, the screen saver will still appear, even if this box is checked.

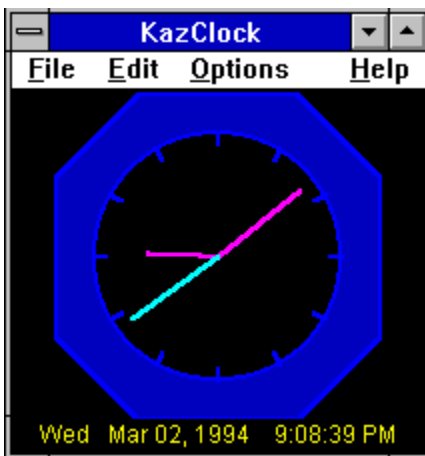


Kaczynski Software Products

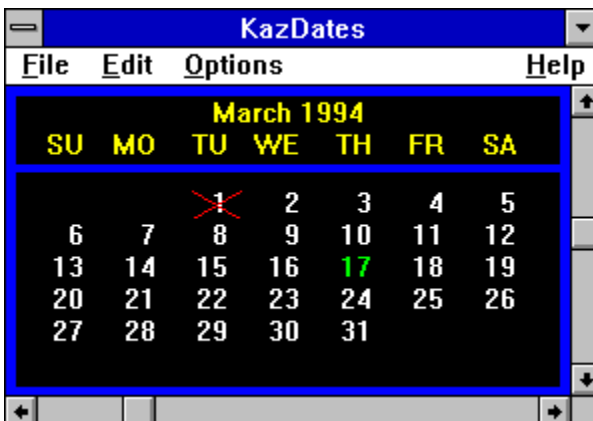
These are some of the other programs available from [Kaczynski Software](#):



KazLines creates an image that continuously changes shape, size, and color. Different images can be created by selecting one of nine different shapes and changing the line and color characteristics.



KazClock provides an on screen clock with the ability to customize all colors. A built in alarm reminds you about important events.



KazDates provides a monthly calendar with scroll bars to easily change the month and year. Most of

the display attributes can be customized.



Disclaimer of Warranty

This software and documentation are provided "**as is**" and without warranties as to performance, merchantability, fitness for particular purpose, or any other warranties whether expressed or implied. The user assumes the entire risk of using this program. In no event will liability for any damages ever exceed the registration fee paid for the license to use the software, regardless of any form of the claim.

See Also

[License Agreement](#), [Registration](#)



License Agreement

This software and documentation is owned and copyrighted by Daniel R. Kaczynski and **Kaczynski Software**. You may use the demonstration version of the software and documentation for up to fifteen days without cost or obligation. After these fifteen days, you must register the software if you wish to continue using it. After the registration fee has been paid to **Kaczynski Software**, you are entitled to unlimited use of one copy of the registered version of the software and documentation for the current and any future versions of the software.

See Also

[Registration](#), [Disclaimer of Warranty](#)

Installation Dialog Box

The following dialog box appears when the program runs for the first time:



The image shows a Windows-style dialog box titled "KazLines Installation". It has a blue title bar with a minus sign on the left. The dialog box has a light gray background with a grid pattern. It contains two text input fields: one labeled "Name" and one labeled "Company". Below the input fields are three buttons: "OK" with a green checkmark icon, "Cancel" with a red X icon, and "Help" with a blue question mark icon.

You must enter your name, but the company field is optional. When the information is correct, push the OK button. Your copy of the program will be personalized with the information you provided.

See Also
[Registration](#)

Registration Dialog Box

The following dialog box appears when the Register Command is used:



The image shows a dialog box titled "KazLines Registration". It has a blue title bar with a minus sign on the left. The dialog box contains three text input fields, each with a label above it: "Name", "Company", and "Registration Number". At the bottom of the dialog box, there are three buttons: "OK" with a green checkmark icon, "Cancel" with a red X icon, and "Help" with a blue question mark icon.

You must enter your name and the registration number, but the company field is optional. When the information is correct, push the OK button. Your copy of the program is then registered to you. This will remove the five minute limitation of the demonstration version.

If you do not have a registration number, use the Print Registration Form command to request one.

See Also

Registration, Registration Command, Print Registration Form

Name

Enter your name in this box so that your copy of the program can be personalized. This field is required.

Company

Enter your company name in this box so that your copy of the program can be personalized. This field is optional.

Registration Number

Enter the registration number provided by [Kaczynski Software](#). If you don't have a registration number, use the [Print Registration Form](#) command to request one.

Print Registration Form Command (File Menu)

Use this command to print a copy of the registration form.

See Also

[Registration](#), [Registration Command](#), [Registration Dialog Box](#)

Register Command (File Menu)

Use this command to register your copy of the program with the [Registration Dialog Box](#).

See Also

[Registration](#), [Registration Dialog Box](#), [Print Registration Form](#)

Exit Command (File Menu)

Use this command to save the current configuration and stop the program.

Print Setup Command (File Menu)

Use this command to modify the current printer settings.

OK Button

Use this button to accept the entries made in the dialog box.

Cancel Button

Use this button to close the dialog box without saving any changes.

Help Button

Use this button to display this help page.

